

# Photovoltaic Beacon

## User Guide

**SUMMARY:** This document describes the features, usage, and over the air (OTA) configuration of the Photovoltaic (PV) Beacon.



**Atmosic™**

PV Beacon Use Guide

January 31, 2025

4392-0166-0066

# Table of Contents

<b>User Guide</b>	<b>1</b>
<b>Table of Contents</b>	<b>2</b>
<b>List of Figures</b>	<b>3</b>
<b>List of Tables</b>	<b>3</b>
<b>Acronyms and Abbreviations</b>	<b>3</b>
<b>1. Overview</b>	<b>4</b>
<b>2. PV Beacon Features</b>	<b>5</b>
<b>3. Sensor Beacons</b>	<b>6</b>
<b>4. Default Beacon Configuration</b>	<b>7</b>
<b>5. Sensor Beacon Payload</b>	<b>7</b>
<b>6. Beacon Operation</b>	<b>9</b>
6.1 Battery Free Operation	9
6.2 Battery Life Extension	10
<b>7. Changing PV Beacon Parameters</b>	<b>11</b>
7.1 Connecting to the Beacon	11
7.2 Sending AT Commands	12
7.2.1 Unlock Beacon	12
7.2.2 Set Advertising Data	12
7.2.3 Set Advertising Interval	13
7.2.4 Set Beacon Transmit Power	13
7.2.5 Set Beacon Device Name	14
7.2.6 Initiate System Reset	14
7.3 Error Messages	15
<b>Reference Documents</b>	<b>17</b>
<b>Revision History</b>	<b>18</b>

## List of Figures

Figure 1 - PV Beacon Unit

Figure 2 - Inside of the PV Beacon

Figure 3 - ATM DevTools Maf. Data

## List of Tables

Table 1 - PV Beacon Configuration

Table 2 - Sensor Beacon Payload

Table 3 - Beacon Operation with Fully Charged Storage Capacitor

Table 4 - Supported AT Commands

Table 5 - Specific Errors

Table 6 - Command Errors

## Acronyms and Abbreviations

Acronyms	Definition
GATT	Generic Attribute Profile
LE	Low Energy
OTA	Over-The-Air
PV	Photovoltaic

# 1. Overview

This document details the use of PV Bluetooth LE beacons created by Atmosic to demonstrate how the energy harvesting capabilities of the Atmosic ATM3 device can be used to either extend the battery life or implement a completely battery free beacon. This document will describe the features, usage, and over the air OTA configuration of the PV Beacon Reference Design.

Reference Design	SoC	SoC Marketing Part Number	Reference Design Part Number
Photovoltaic Beacon	40-pin 5x5 mm QFN	ATM3302	ATMBCN-3202-SS

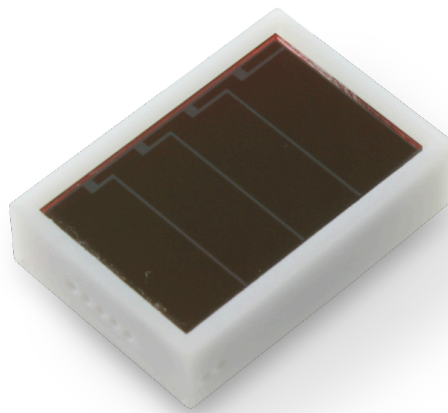
The PV beacon is designed to operate at indoor light levels without the need for batteries. In general, the required light level for beacon operation will depend on the beacon rate and size of the PV cell. The 10.9 cm<sup>2</sup> PV cell on the beacon can support a default once per second beacon interval at low (~200 lux) indoor light levels. The PV Beacons optionally support sensors for Temperature/Humidity and accelerometer.

**Note:** *Operating the beacon battery free requires that the internal storage capacitor have sufficient stored energy to start beacon operation. See [Beacon Operation](#) section for details.*

These beacons are provided for demonstration and evaluation purposes only with no guarantee of performance. These beacons are not to be used for commercial purposes.

## 2. PV Beacon Features

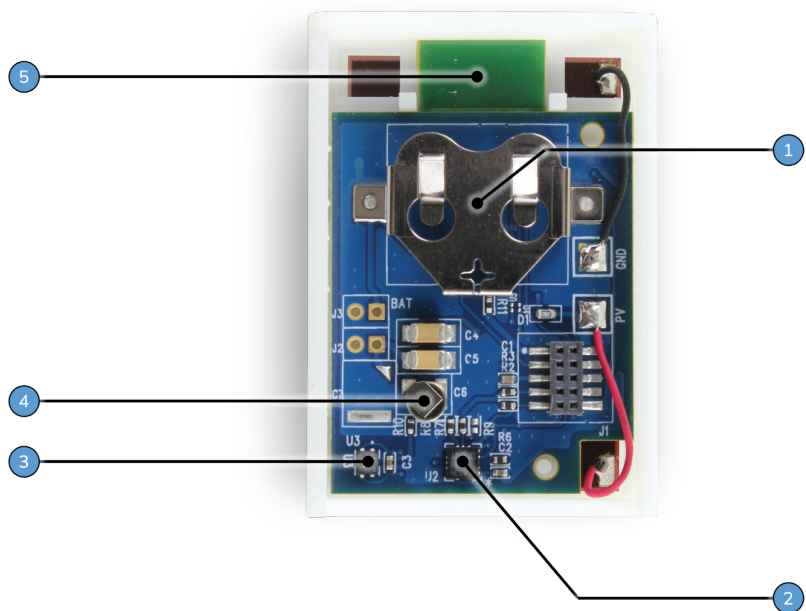
The Atmosic PV beacon is shown in [Figure 1](#). The beacon incorporates a Panasonic AM-1454 Amorphous Silicon PV cell to harvest ambient light and a 33 mF supercapacitor for storage of any excess energy. An optional coin cell battery can be used to power the device when ambient light is unavailable and the supercapacitor is depleted. There is no rechargeable battery option for the beacon.



*Figure 1 - PV Beacon Unit*

The mini beacon's internals can be viewed by sliding off the rear cover of the unit. [Figure 2](#) shows the exposed circuit board with the battery holder and supercapacitor. The Bluetooth LE module attached to the opposite side of the board is partially exposed at the top of the figure.

A single CR1616 battery may be installed in the battery holder to power the beacon during extended periods of use when a light source is not available. The 33 mF supercapacitor is permanently installed and should not be removed.



- 1 - CR1616 Battery Holder
- 2 - Accelerometer
- 3 - Temperature/Humidity Sensor
- 4 - 33mF Supercapacitor
- 5 - RF PCB Module with Atmosic SoC

Figure 2 - Inside of the PV Beacon

The mini beacon measures 47mm x 33mm x 12mm. The beacon size is primarily dictated by the size of the PV cell.

More information about Panasonic Amorphous Silicon products can be found at <https://panasonic.co.jp/ls/psam/en/products/>

### 3. Sensor Beacons

The PV beacon is available with an optional temperature/humidity sensor and an accelerometer sensor. The temp/humidity sensor is an AMS ENS210 and the accelerometer is an ST LIS3DH. PV Beacons with sensors are indicated with a circular yellow sticker on the outside of the beacon. You can also check for the presence of the sensors by checking the inside of the beacon as shown in [Figure 2](#).

## 4. Default Beacon Configuration

The details of the default beacon configuration are shown in [Table 1](#). [Changing PV Beacon Parameters](#) section of this document outlines the commands and procedure for changing some of the beacon's parameters using a Bluetooth LE connection.

Configuration Parameter	Value
Device Name	Name: Atmosic BCNxxxxxx xxxxxx: last 6 digits of BD address
Beacon Advertising Interval	1 per second
Output Power	~ 0 dBm (uncalibrated)
Advertisement Type	Legacy
# of advertising Channels	3
Connectable	Yes
Payload content	28 Bytes
Type	Eddystone

*Table 1 - PV Beacon Configuration*

## 5. Sensor Beacon Payload

PV Beacons with temperature/humidity and accelerometer sensors send a separate beacon with sensor data. The format of this data is detailed in [Table 2](#).

The sensor data from the Beacon can be monitored using the Atmosic Dev Tools mobile application available on Google Play and Apple App Store by searching for Atmosic DevTools.

Offset	Length	Type	Data
0	1	Data Length	0x16
1	1	manufacturer_flag	0xFF
2	2	company_id	0x0A24

Offset	Length	Type	Data
4	1	type	0x00
5	2	temperature	Read from ens210
7	2	humidity	Read from ens210
9	2	X axis	Read from lis3dh
11	2	Y axis	Read from lis3dh
13	2	Z axis	Read from lis3dh
15	4	Vstore value	Vstore channel
19	4	Vbatt value	Vbatt channel

Table 2 - Sensor Beacon Payload

The full sensor beacon payload can be read with the BLE sniffers. Atmosic DevTools only displays from “company\_id” field (offset 2) to “Vbatt value” field (offset 19). As shown in [Figure 3](#), the Atmosic DevTools displays a total 21 bytes of data. The 1 byte of the “Data Length” field and the 1 byte of the “manufacture\_flag” field are not displayed in the Atmosic DevTools app. The following uses the data in [Figure 3](#) as an example to match the sensor beacon payload format in [Table 2](#):

- 24 0A is the “company\_id” (0x0A24)
- 00 is the “type” (0x00)
- DA 13 is the “temperature” (0x13DA)
- 00 30 is the “humidity” (0x3000)
- 00 00 is the “X axis” (0x0000)
- 00 FD is the “Y axis” (0x00FD)
- 00 C0 is the “Z axis” (0xC000)
- 4E E5 80 3F is the “Vstore value” (0x3F80E54E)
- E2 D9 3A 40 is the “Vbatt value” (0x403AD9E2)

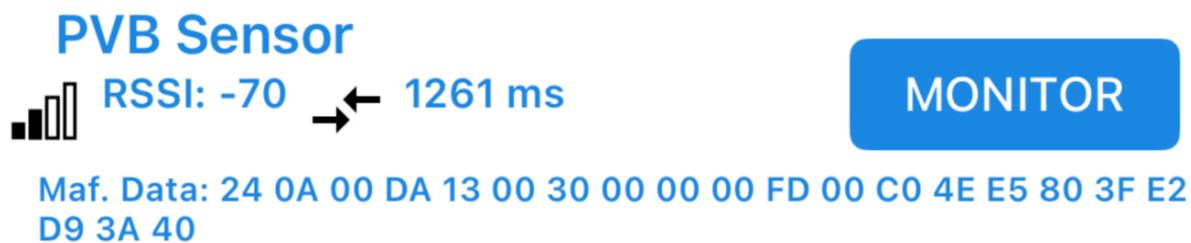


Figure 3 - ATM DevTools Maf. Data



The temperature and humidity hex data (2 bytes each) can be converted back to the actual reading by using the formula: (converting data from hex to decimal)/256. For example, temperature data = 0x13DA(hex) = 5082(decimal), and the converted actual temperature reading = 19°C(5082/256). The data from lis3dh accelerometer are directly put inside the ADV payload. The details can be found in the Atmosic SDK ens210 and lis3dh driver codes.

The 4 bytes of Vstore and Vbatt data to floating numbers conversion follows IEEE754.

## 6. Beacon Operation

The PV beacon can be used without a battery to demonstrate how energy harvesting can enable operation from only ambient light or with a battery to demonstrate how harvesting ambient light can be used to extend the battery life of a beacon.

The light level required to operate the beacon will depend on the beacon interval, output power, and size of the advertising data. In general, the beacon can maintain its default once per second beacon even at relatively low indoor light levels around 200 lux. Higher indoor light levels above 500 lux are sufficient for even the fastest 250 ms beacon interval.

### 6.1 Battery Free Operation

Long term operation without a battery is possible since the beacon will store any harvested energy not immediately used for normal operation to the 33 mF capacitor to power the beacon when sufficient light for beacon operation is not available. Depending on the duration and level of light available where the beacon is operating, a larger or smaller capacitor may be required to meet the operational goal for the beacon in a specific application. Contact Atmosic representative for help determining how much PV harvesting capacity and storage is required for your application.

Starting battery free operation requires that the beacon's storage capacitor have sufficient energy to cold start the ATM3. If the storage capacitor is depleted, it may require around 1-2 minutes in typical indoor light level (~500 lux) to energize the capacitor to a sufficient level to start operation. It will take longer time in environments with lower lux levels.

From a fully charged storage capacitor the beacon can operate for approximately 60 (sensor beacon) to 80 (non-sensor beacon) minutes at a once per second beacon interval without any ambient light. See [Table 3](#).

Beacon Type	Cold Start Latency	Sustainability without PV
Non-Sensor	around 1-2 minutes in typical indoor light level (~500 lux)	80 minutes
Sensors (Temperature/Humidity & Accelerometer)	around 1-2 minutes in typical indoor light level (~500 lux)	62 minutes

*Table 3 - Beacon Operation with Fully Charged Storage Capacitor*

## 6.2 Battery Life Extension

Installing a battery into the battery holder will ensure continuous beacon operation even when ambient light is not available for extended periods. The ATM3 is designed to operate from harvested energy as its primary energy source, from stored excess harvested energy when harvested energy is insufficient for operation, and finally from the battery when harvested and stored energy is not enough. This method of operation maximizes both the utilization of harvested energy and battery life.

For some applications, relying solely on harvested energy may not be feasible when available light is inconsistent and continuous operation is critical. When operating in this type of environment using energy harvesting to extend battery life can ensure much longer intervals between battery changes or possibly enough continuous operation to never require battery replacement.

If the battery is exhausted the beacon is designed to continue to operate with the same behavior as a battery free beacon.

## 7. Changing PV Beacon Parameters

Atmosic PV beacons support re-configuration of a limited number of parameters via AT commands issued over the air when connected via the GATT profile. This section covers the procedure for issuing commands to the beacon as well as the AT command and return message formats.

Many mobile phone based applications that support the GATT profile are available and can be used to configure the PV Beacon, contact Atmosic support for additional information.

### 7.1 Connecting to the Beacon

The following steps are required to get the beacon into a state ready to accept AT commands:

- 1) Using an application that supports GATT connections, scan for the beacon and initiate a connection
- 2) Once connected, look for the Generic Attribute with the service UUID 41746D6F-7369-6300-0000-000000000000
- 3) Under this attribute select the characteristic with Write Response properties and the service ID 41746D6F-7369-6300-0000-000000000001
- 4) Connect to this characteristic and enable notifications

At this point AT commands can be issued as strings to the PV beacon.

**Note:** *Connections to the PV beacon require much more energy than normal beacon advertisements. During any reconfiguration, Atmosic recommends that a battery be installed or that the PV cell be exposed to bright light levels for the duration of the connection. Difficulty connecting to the beacon or maintaining a connection is an indication that insufficient energy is available and a battery should be installed or the beacon should be moved closer to a bright light source.*

## 7.2 Sending AT Commands

Once connected, all AT commands are sent to the beacon as strings. If notifications are turned on, the beacon will respond with OK if the command is accepted and an ERROR message with a response code if the command is invalid. The ERROR messages are described in [Error Messages](#) section of this document.

[Table 4](#) provides a summary of AT commands supported by the beacon. Each command is detailed in the sub-sections that follow.

AT Command	Function
AT+UNLOCK	Unlocks the beacon for configuration
AT+ADVDATA	Sets the advertising data
AT+ADVINT	Sets the advertising interval
AT+TXPWR	Sets the beacon's transmit power
AT+NAME	Sets the beacon's device name
AT+SYSRESET	Initiates a system reset of the beacon

*Table 4 - Supported AT Commands*

### 7.2.1 Unlock Beacon

This command unlocks the beacon for configuration. The UNLOCK command with the beacon password must be correctly sent to the beacon before any other commands will be accepted.

The default password for unlocking the beacon is atm1atm123.

AT+UNLOCK=	
Parameter Format	S(~31)
Example	AT+UNLOCK=atm1atm123
Return Value	OK

### 7.2.2 Set Advertising Data

The ADVDATA command sets advertising data output by the beacon.

**AT+ADVDATA=**

Parameter format	A(~31)
Example	AT+ADVDATA=051250015001
Return Value	OK
Description	Example: AT+ADVDATA=051250015001 05 # len 12 # «Slave Connection Interval Range» 5001 #Conn_Interval_Min little endian 5001 #Conn_Interval_Max little endian

### 7.2.3 Set Advertising Interval

The advertising interval of the beacon may be set with this command to values between 250 ms and 10.24 seconds. The interval is set in increments of 0.625 ms, so values between 400 (250 ms) and 16384 (10.24 seconds) are permitted.

**AT+ADVINT=**

Parameter format	D(400~16384)
Example	AT+ADVINT=640
Return Value	OK
Description	Example: to set the interval for 250 ms, the required value is $250/0.625=400$ . Full command is <code>AT+ADVINT=400</code>

### 7.2.4 Set Beacon Transmit Power

This command changes the transmit output power of the beacon. Only specific values between -20 dBm and +4 dBm are supported as outlined in the table below.

**Note:** Some GATT applications may require a 0x before non-numeric values to indicate hexadecimal data - i.e. `AT+TXPWR=0xFC`

**AT+TXPWR=**

Parameter format	B(0~)
Example	AT+TXPWR=00
Return Value	OK

Description	Valid output levels	
	Value (string)	Output Power (dBm)
	EC	-20
	F6	-10
	FA	-6
	FC	-4
	FE	-2
	00	0
	02	2
	04	4

### 7.2.5 Set Beacon Device Name

This command allows the user to change the device name of the beacon. String lengths of up to 18 characters can be used.

#### AT+NAME=

Parameter format	S(~18)
Example	AT+NAME=AtmosicBCN
Return Value	OK

### 7.2.6 Initiate System Reset

This command initiates a reset of the beacon. If the command is accepted the beacon will reset immediately with no response. The system reset command should be issued after any configuration activity to ensure the beacon is operating with the new parameters.

Note that the equals sign (=) is required.

#### AT+SYSRESET=

Parameter format	None
Example	AT+SYSRESET=
Return Value	None

### 7.3 Error Messages

There are two types of error messages, specific error responses that are based on the state of the beacon and general command errors that relate to the command string that was sent.

Specific error responses will result in a return message that identifies the command and error code. These errors are related to the need to send the correct password to unlock the beacon before any other commands are sent. [Table 5](#) lists the specific error values.

Specific Errors	
Return Value	Error Reason
1	APP_ERR_UNLOCK_FIRST
2	APP_ERR_WRONG_PASSWORD

*Table 5 - Specific Errors*

#### Example - command sent before beacon unlocked:

```
AT+ADVINT=640

+ADVINT:1
ERROR
```

#### Example - incorrect password sent:

```
AT+UNLOCK=1234

+UNLOCK:2
ERROR
```

Command specific errors will return the ERROR string with a number indicating the reason for the error. These types of errors are related to the command format or argument values issued with the command. [Table 6](#) details the different error values returned.

Command Errors	
Return Value	Error Reason
0	AT_ERR_NO_ERROR
1	AT_ERR_CMD_NOT_SUPPORT
2	AT_ERR_WRONG_ARGU_CNT
3	AT_ERR_WRONG_ARGU_RANGE
4	AT_ERR_WRONG_ARGU_TYPE
5	AT_ERR_WRONG_ARGU_TYPE_OR_RANGE
6	AT_ERR_WRONG_ARGU_CONTENT

*Table 6 - Command Errors*

**Example - Command not supported:**

AT+AD=

ERROR:1

**Example - Argument out of range:**

AT+ADVINT=65550

ERROR:5



## Reference Documents

Title	Document Number
AT Command User Guide	ATM-UGATC
ATM3202 Datasheet	ATM3202-DS

## Revision History

Date	Version	Description
January 31, 2025	0.66	Update <a href="#">Sensor Beacon Payload</a>
Aug 26, 2024	0.65	Update Cold Start Latency in <a href="#">Battery Free Operation</a>
April 6, 2023	0.64	Changed format, no content change.
April 4, 2023	0.63	Added <a href="#">Acronyms and Abbreviations</a> , <a href="#">Reference Documents</a> sections. Updated <a href="#">Table 2 - Sensor Beacon Payload</a> . Changed format.
July 21, 2021	0.62	Format change; updated <a href="#">Sensor Beacon Payload</a> , <a href="#">Changing PV Beacon Parameters</a> sections; removed Atmosic App. information in <a href="#">Sensor Beacons</a> section; removed Configure the Parameters via Atmosic App section, information to be included in separate App user guide.
June 30, 2021	0.61	Updates for Beacon with sensors.
March 9, 2021	0.60	Initial version created.



## ATMOSIC TECHNOLOGIES – DISCLAIMER

This product document is intended to be a general informational aid and not a substitute for any literature or labeling accompanying your purchase of the Atmosic product. Atmosic reserves the right to amend its product literature at any time without notice and for any reason, including to improve product design or function. While Atmosic strives to make its documents accurate and current, Atmosic makes no warranty or representation that the information contained in this document is completely accurate, and Atmosic hereby disclaims (i) any and all liability for any errors or inaccuracies contained in any document or in any other product literature and any damages or lost profits resulting therefrom; (ii) any and all liability and responsibility for any action you take or fail to take based on the information contained in this document; and (iii) any and all implied warranties which may attach to this document, including warranties of fitness for particular purpose, non-infringement and merchantability. Consequently, you assume all risk in your use of this document, the Atmosic product, and in any action you take or fail to take based upon the information in this document. Any statements in this document in regard to the suitability of an Atmosic product for certain types of applications are based on Atmosic's general knowledge of typical requirements in generic applications and are not binding statements about the suitability of Atmosic products for any particular application. It is your responsibility as the customer to validate that a particular Atmosic product is suitable for use in a particular application. All content in this document is proprietary, copyrighted, and owned or licensed by Atmosic, and any unauthorized use of content or trademarks contained herein is strictly prohibited.

Copyright ©2021-2025 by Atmosic Technologies. All rights reserved. Atmosic logo is a registered trademark of Atmosic Technologies Inc. All other trademarks are the properties of their respective holders.



Atmosic Technologies | 2105 S. Bascom Ave. | Campbell CA, 95008  
[www.atmosic.com](http://www.atmosic.com)