

Starting with ATM34/e

Quick Start Guide

SUMMARY: This document provides direction for a new user to start the evaluation of the ATM34/e Wireless SoC and its EVK reference designs.



Atmosic™

Starting with ATM34/e Quick Start Guide

October 14, 2024

7851-0175-0010

Table of Contents

Quick Start Guide	1
Table of Contents	2
1. Overview	3
2. Evaluation Kits (EVK)	3
3. For High-Level General Information	3
3.1 General Documentation	3
3.2 Power Profiler Tools	4
4. For Hardware Engineers	4
4.1 Hardware-Related Documentation	4
4.2 Hardware Design Files	4
5. For Software Engineers	5
5.1 Software-Related Documentation	5
5.2 Latest SDK	5
5.3 Basic Installation Instruction for the Development Platform	6
5.4 Basic Build	7
Revision History	8

1. Overview

This document provides direction for a new user to start the evaluation of the ATM34/e Wireless SoC and its EVK reference designs. It directs hardware and software engineers to the basic information to familiarize themselves with the Atmosic offerings. This guide is not intended to be advanced material guidance for the user.

2. Evaluation Kits (EVK)

EVK	SoC Package	SoC Part Number	Kit Part Number	-Software Example Preloaded -Flag(s) Used
Evaluation Kit for ATM3405	40-pin 5x5 mm QFN	ATM3405-2PCAQK	ATMEVK-3405-PQK	-ble_adv -REF_BCN=power_profile
Evaluation Kit for ATM3425	40-pin 5x5 mm QFN	ATM3425-2PCAQK	ATMEVK-3425-PQK	-ble_adv -REF_BCN=power_profile
Evaluation Kit for ATM3430e	56-pin 7x7 mm QFN	ATM3430E-2WCAQN	ATMEVK-3430e-WQN	-ble_harv_adv

3. For High-Level General Information

Users must be logged in to access most of the below-linked materials.

3.1 General Documentation

Please **select the +** to expand the different sections for more materials.

ATM34/e SoC Documentation



EVK



- In the [ATM34/e SoC Documentation](#) section

- Product Briefs
 - [ATM Series Product Brief](#)
 - [ATM34/e Series Product Brief](#)
- Datasheets
 - [ATM34/e Series Datasheet](#)
- White Papers
 - Please **select the +** to expand to view different White Papers

Product Briefs	+
Application Notes	+
Datasheets	+
White Papers	+

3.2 Power Profiler Tools

- [ADV \(Advertising\) Beacon Profiler](#)
- [Connection Interval \(CI\) Profiler](#)

4. For Hardware Engineers

All EVKs are shipped with software preloaded (with debug console output disabled) as shown in the table above. This allows the hardware engineers to measure the low power consumption demonstrated by the Atmosic ATM34/e Wireless SoCs. Only the ATMEVK-3430e-WQN EVK supports energy harvesting measurements. The default board configuration is with a coin cell (Please insert a coin cell or read the hardware documents listed below to configure for other power supplies, like USB).

4.1 Hardware-Related Documentation

- [ATM34/e Series Evaluation Kit User Guide](#)
- [ATM34/e Series EVK Power Consumption Evaluation User Guide](#)
- [ATM33e Series and ATM34e Series Energy Harvesting EVK User Guide](#)

4.2 Hardware Design Files

Please **select the +** to expand the different sections for more materials.

ATM34/e SoC Documentation

+

EVK

+

- In the [EVK](#) section
 - Hardware design files
 - ATMEVK-3405
 - ATMEVK-3425
 - ATMEVK-3430e

5. For Software Engineers

It is recommended that software engineers start with a basic setup and avoid starting to use other tools (IDEs) to get a baseline understanding of the build/load of the binaries, software examples, and SDK package directory structures.

5.1 Software-Related Documentation

- [SDK User Guide \(Released with SDK 6.0.0\)](#)
- [SDK 6.0.0 Release Notes](#)

5.2 Latest SDK

SDK Releases

- Following are the officially supported SDK releases
- Contact [Atmosic Technical support team](#) for previous releases

6.0.0	+
5.5.x	+
5.4.x	+

- In the [SDK Releases](#) section
 - Please **select the +** to expand the different sections for more materials.

SDK Releases

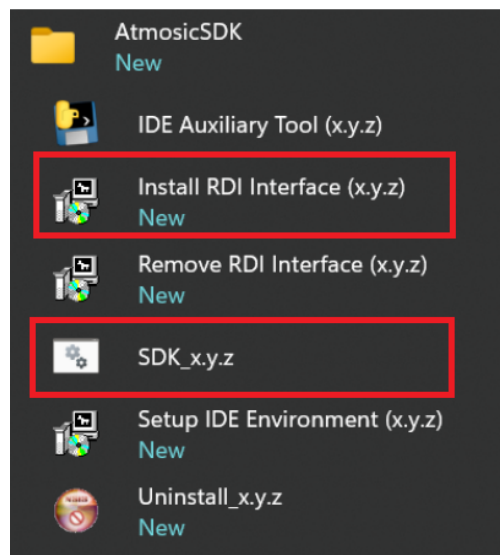
- Following are the officially supported SDK releases
- Contact [Atmosic Technical support team](#) for previous releases

6.0.0	+
5.5.x	+
5.4.x	+

- List of OSes supported on the ATM34/e
 - Bare Metal

5.3 Basic Installation Instruction for the Development Platform

- From the SDK Releases above (for BareMetal)
 - Windows
 - Execute the installer after download
 - Launch the SDK_xy.z



- Plug the EVK into the PC through the USB cable
 - Install the RDI Driver. This must be done after the PC/EVK connection
- Linux
 - Untar the package after download
 - Follow instructions from \SDKversion\tools\README
- MacOS

- Untar the package after download
 - Follow instructions from
 \SDKversion\tools\README.macOS

5.4 Basic Build

- Go to the examples directory
 - \SDKversion\platform\atm34\ATM34xx-2\examples\BLE_adv\
 - This will build and load the image into the EVK
 - Valid <chip> usage is specific to EVK shown below. Review the label on the back of the EVK to match the list.
 - ATMEVK_3405_PQK_2
 - ATMEVK_3425_PQK_2
 - ATMEVK_3430e_WQN_2
 - Enable a terminal to connect to the COM PORT to view console messages
 - NOTE: Multiple COM PORTs will show up from the EVK
 - Open a terminal window for each to see which is the correct COM PORT

Revision History

Date	Version	Description
October 14, 2024	0.10	Initial Release



ATMOSIC TECHNOLOGIES – DISCLAIMER

This product document is intended to be a general informational aid and not a substitute for any literature or labeling accompanying your purchase of the Atmosic product. Atmosic reserves the right to amend its product literature at any time without notice and for any reason, including to improve product design or function. While Atmosic strives to make its documents accurate and current, Atmosic makes no warranty or representation that the information contained in this document is completely accurate, and Atmosic hereby disclaims (i) any and all liability for any errors or inaccuracies contained in any document or in any other product literature and any damages or lost profits resulting therefrom; (ii) any and all liability and responsibility for any action you take or fail to take based on the information contained in this document; and (iii) any and all implied warranties which may attach to this document, including warranties of fitness for particular purpose, non-infringement and merchantability. Consequently, you assume all risk in your use of this document, the Atmosic product, and in any action you take or fail to take based upon the information in this document. Any statements in this document in regard to the suitability of an Atmosic product for certain types of applications are based on Atmosic's general knowledge of typical requirements in generic applications and are not binding statements about the suitability of Atmosic products for any particular application. It is your responsibility as the customer to validate that a particular Atmosic product is suitable for use in a particular application. All content in this document is proprietary, copyrighted, and owned or licensed by Atmosic, and any unauthorized use of content or trademarks contained herein is strictly prohibited.

Copyright ©2022-2024 by Atmosic Technologies. All rights reserved. Atmosic logo is a registered trademark of Atmosic Technologies Inc. All other trademarks are the properties of their respective holders.